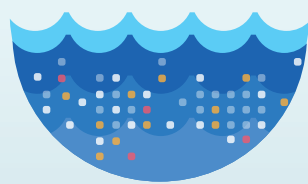




Data Lake vs Data Warehouse

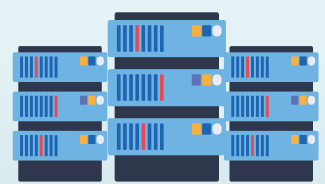
The exponential growth of data spurred by various factors has made data processing and storage a primary concern. Data lakes and data warehouses are widely used for big data storage. But, they serve different purposes and are not interchangeable terms.

Key differences



Data lake

VS



**On-premise
data warehouse**



PURPOSE

Raw data flows in, either cater to a specific use case or simply for storage

All data is stored with a specific utilization in mind



STORAGE

Stores all data in its native format, regardless of source or structure and hence requires higher storage capacity

Stores data that is structured with their corresponding attributes, therefore requiring lower storage capacity



SCHEMA

The schema of a data lake is defined after the data has been processed.

The schema of a data warehouse is defined before the data has been stored



COST

Data democratization and absence of input data preparation makes data storage costs very low

A data warehouse can be expensive particularly if the amount of data is huge



ANALYSIS

Ideal for exploratory analysis owing to easy access of enterprise-wide data

Easy for business users to leverage processed data for faster analysis

Reach out to our [experts](#) to learn more on how your business can adopt a robust cloud data infrastructure for scalable analytics across the organization.



www.sigmoid.com